



Instruction Manual

1. Box Contents

a



b



a. Screen Record Devices

b. Quick userGuide

What is USB-C DisplayPort (DP Alt Mode)?



USB-C ports capable of transferring DisplayPort signals are either called USB-C DisplayPort or DP Alt Mode. They allow you to connect video sources (e.g. PCs, Blu-Ray players, etc.) and display devices (e.g. TVs, projectors, etc.) that support DisplayPort to each other via their USB-C ports to broadcast high-definition video.

The best method to decipher whether your device supports DisplayPort over USB-C is to check either the product specs on the manufacturer's official website or to check websites with in-depth product reviews and/or information.





Mini Fan (inside)



Please make sure your PC supports DisplayPort over USB-C.

2. How to use this product?

Step 1:



Please insert the computer with a typec interface.(DP function)

Step 2:



Install SCREEN CLONER software

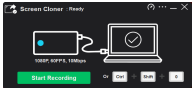
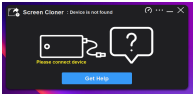
Step 3: After the software is installed,



Audio Device Settings

Please set the speaker as the default sound output device. And turn on the stereo mix output device.If the stereo mix option is missing,reinstall the sound card driver.

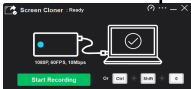
Step 4:



If the software and hardware are ready, you can start recording the screen.

3. How to use this software?

Menu Set



4. Recording Schedule

Recording Timer

Recording schedule



Timer



Timer



Name:

Enabled

Recording duration: Hours minutes seconds

Starting time:

Repeat: Once Every day Every week Every month

Date:

OK

Cancel

5. Product Specifications

Input:

Computer TYPEC input, automatically adapting to resolution

Max Record:

1920 x 1080 - 60fps H.264

Net weight of product: 30g

Product size: 55x55x17.6mm

Typec Cable: 150mm

